



**WARNINGS**

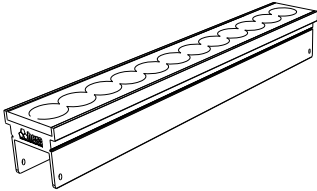
- Mains power must be switched off before installing products.
- The connection, installation, commissioning and assembly operations of the products must be performed by qualified technicians.
- Do not install wet, deformed or defective products and equipments, do not provide power, please contact the nearest technical service.
- Install the products only in accordance with the connection patterns specified in the relevant Specification Sheet.
- Do not open or attempt to repair the products and connection equipments.



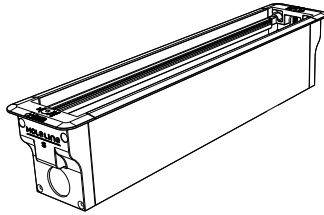
**WARNINGS**

- Do not open extra holes on products for mounting and protect products from impacts.
- Do not install the products except as described below.
- Different installation of products may cause products to malfunction or hazardous conditions.
- Use recommended mounting equipments for products.
- This product is not suitable for indoor use. Electric shock may pose a risk of fire or combustion.
- Please follow the steps below when installing the products

**Packing Contents**



1 pcs.  
Moleline@Series



1 pcs.  
Moleline@Series Holder



1 pcs.  
Allen Key



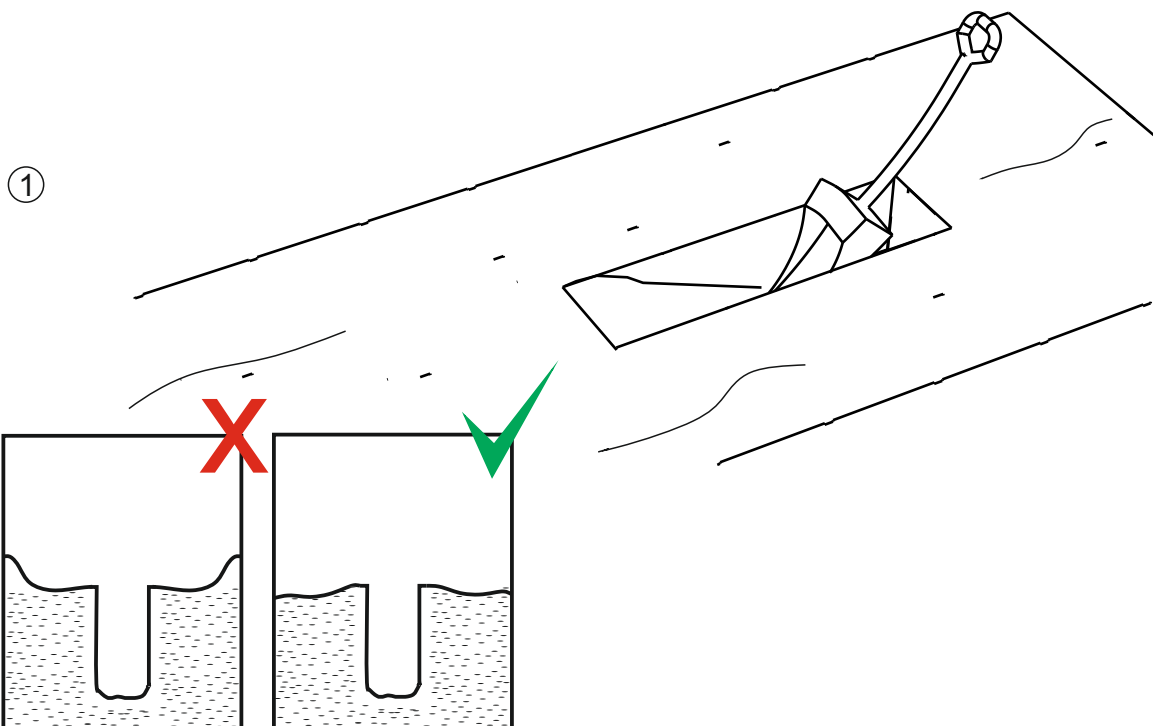
Installation Guide

**Installation**

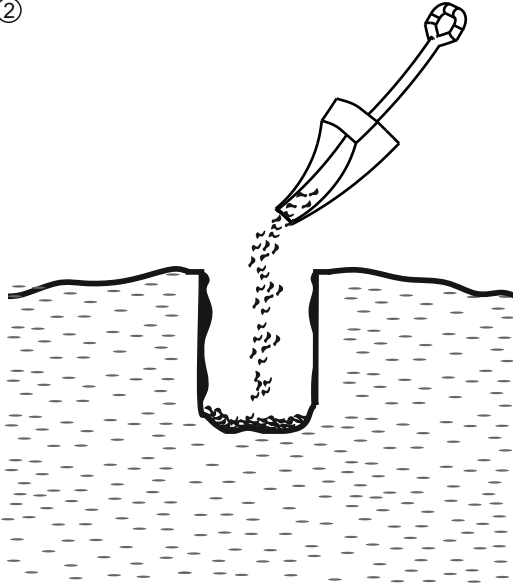
**Ground Construction**

**WARNINGS**

- All installation procedures, including installation of the products, should be carried out by authorized technicians.
- Installation of products in areas with constant fluid flow should be avoided.
- Do not engage in installation applications other than the installation method specified in the manual.
- Do not block the water drain channels in the products. Be careful during assembly.
- When creating the product holder well, consider the environmental infrastructure.
- Do not build Holder well on infrastructure like electricity, water, natural gas.
- Moleline Series is suitable for inground use when the conditions specified in the manual are created.

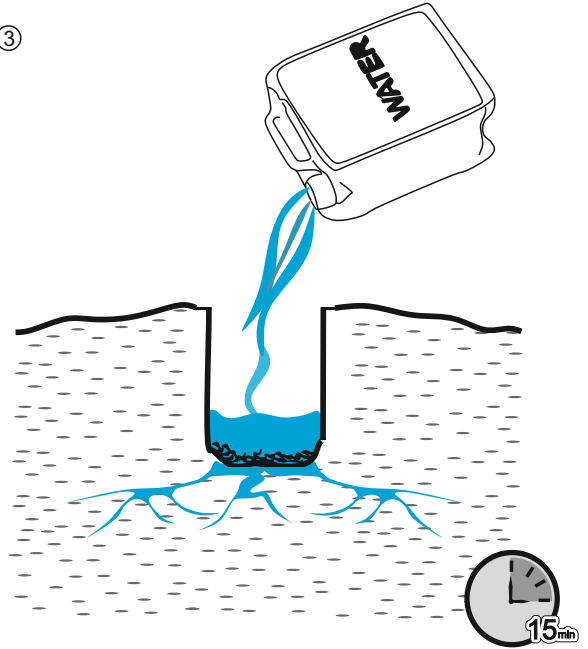


②



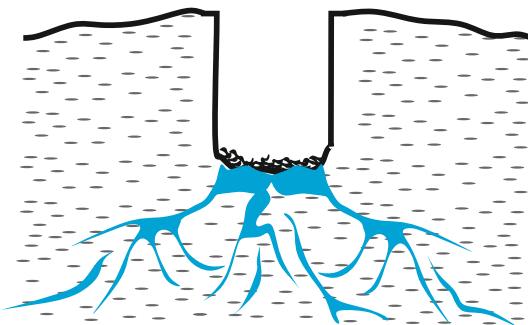
Gravel should be laid on the floor to prevent overflowing and realize water discharge for holder area.

③



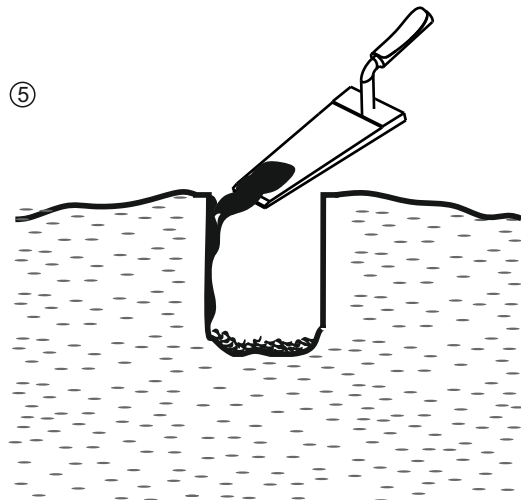
To test the water drain, place a some water should be poured. 15 minutes should be waited to see the water mixes with the artesian well.

④

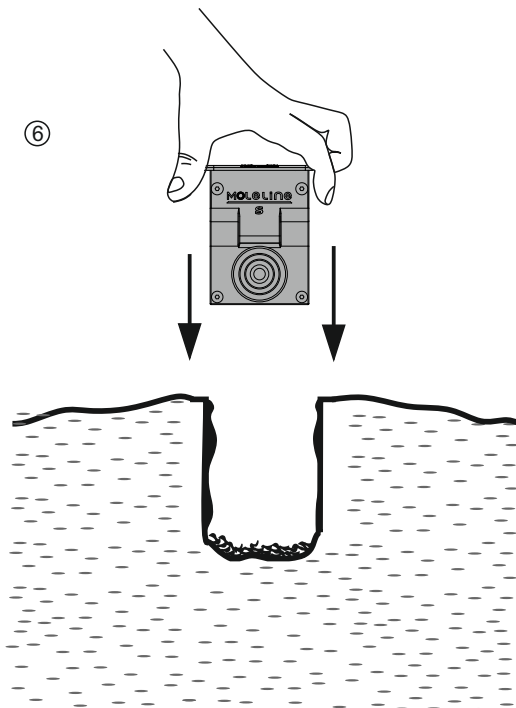


The ground will be ready when all the water mix to artesian.

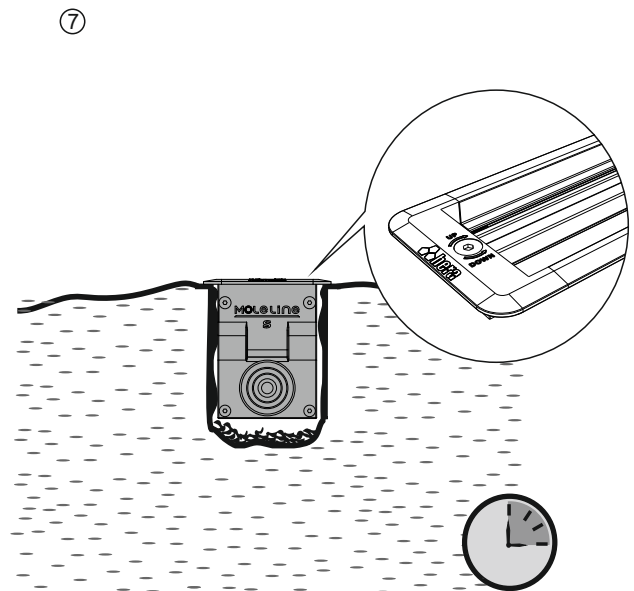
⑤



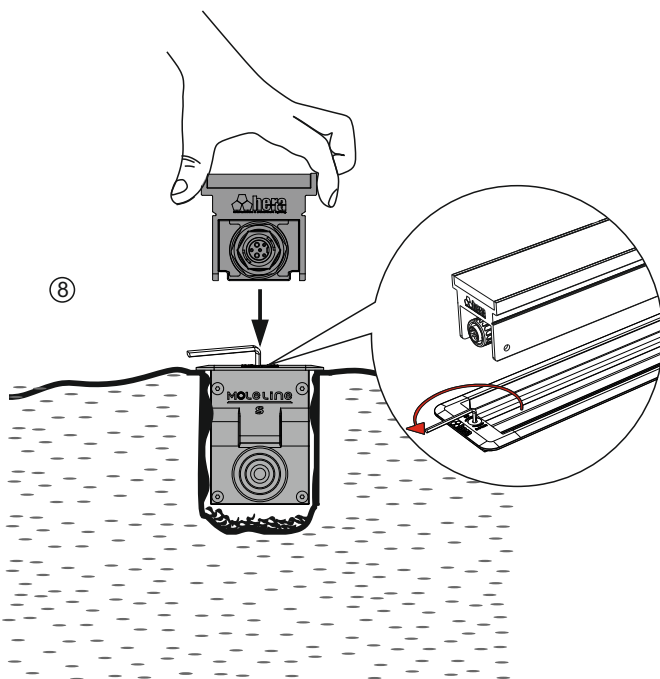
The concrete should be applied on sides of the hole to fix product.



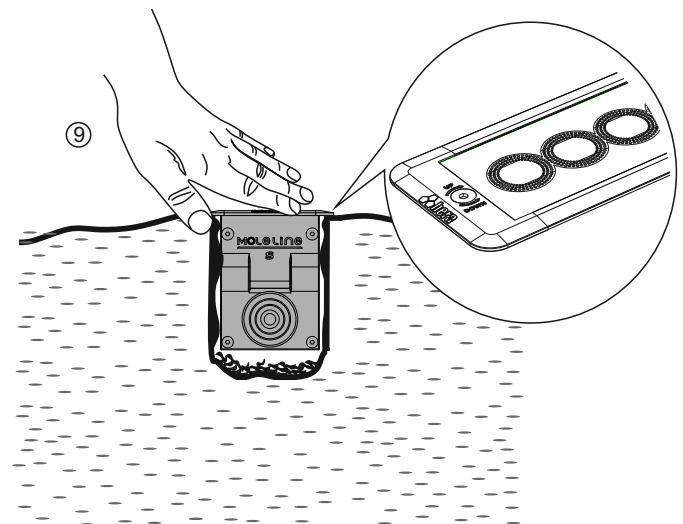
The holder should be installed to all prepared floor drainage indicated in the figure.



Wait for the concrete is freezing. The holder should be stayed remain and protected for external factors.



Before placing the product on the fixed Holder, the product insertion screws must be tightened in the **down** direction as shown in the figure. Do not place the product without checking. Otherwise, the product will not sit, and the elevator mechanism will be damaged if forced.



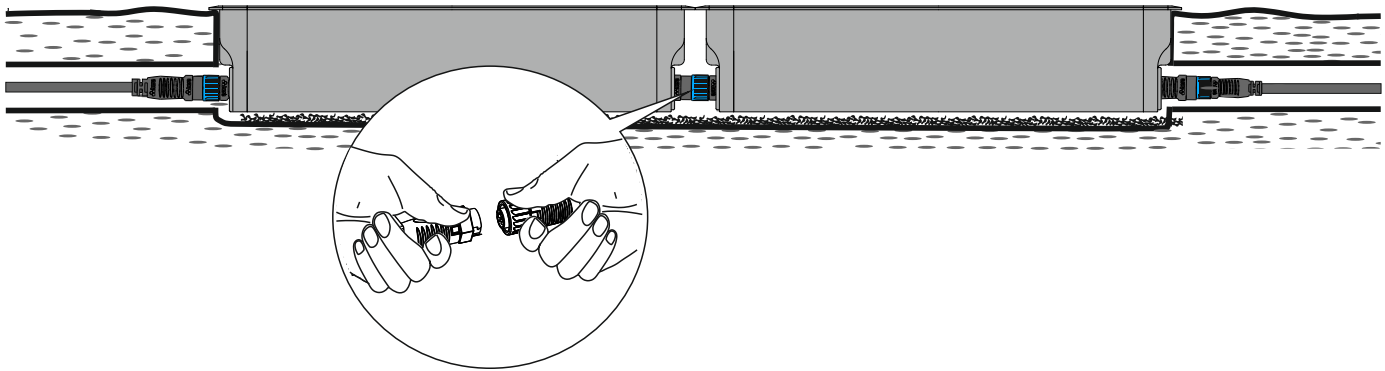
Place the product in its holder and press lightly. The click sound will come when the product is placed in the holder.

## Connection

### WARNINGS

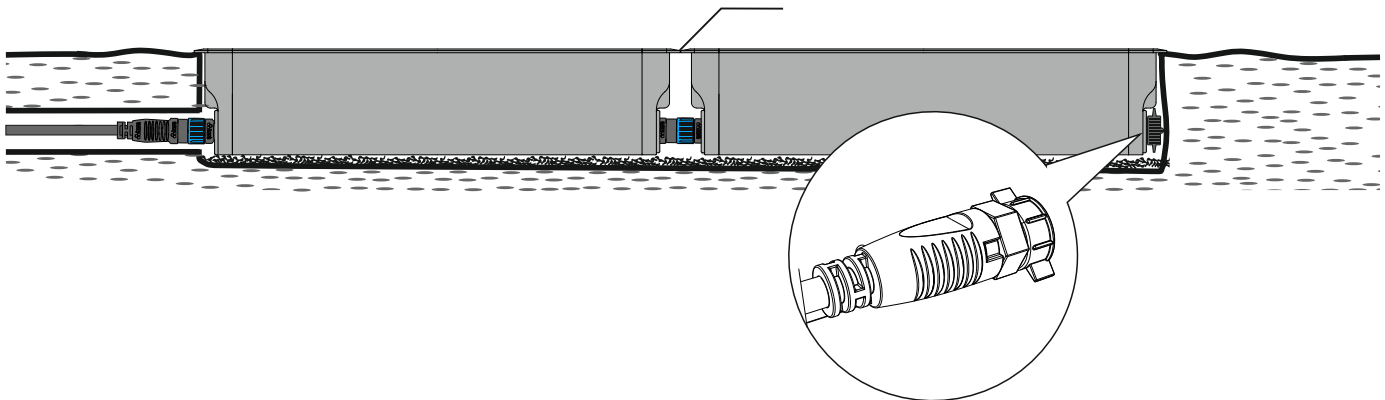


- All installation procedures, including installation of the products, should be carried out by authorized technicians.
- Installation of product areas should be avoided in with constant fluid flow.
- Installation ground should be avoided on soft soil, clay, sand etc.
- Do not engage in installation applications other than the installation method specified in the manual.
- Isolate cable and cable connectors.
- Do not use on surfaces without forming the infrastructure of electrical and data cables.
- Do not drill any extra mounting holes in any area of the product.
- Do not block the water discharge channels in the products, be careful during installation.



2+4 Pin Pushlock Type Connector

The two products should be 2mm at least.



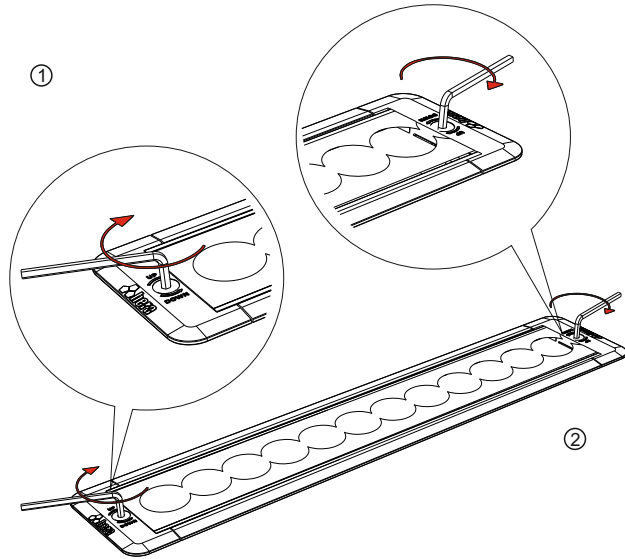
You must use Push Lock Type 2 + 4 Pin  
Female Plug Cap for the last product of line



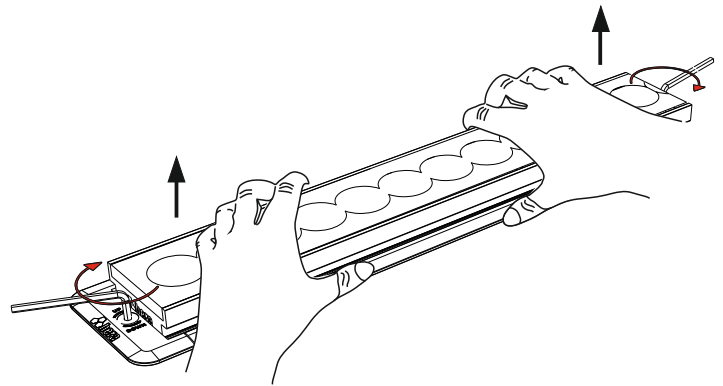
**WARNINGS**

- The electrical conductor must be absolutely closed during the installation and uninstallation processes.

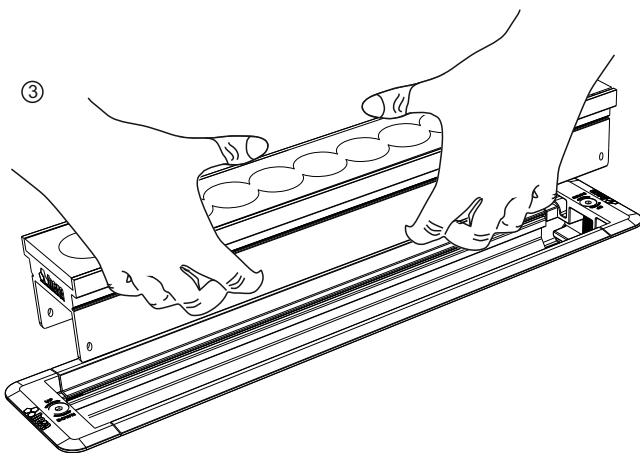
**Uninstall**



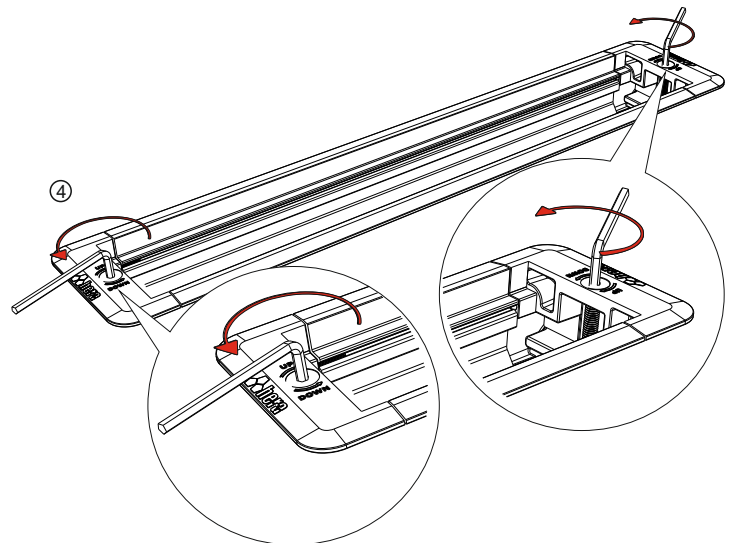
Turn the screw in the up direction with the hex key to remove the product from the holder



The product will rise up to a certain distance from the holder.



Insert the product's connectors and completely remove the product from its holder



The product insertion screws must be tightened in the **DOWN** direction, as shown in the figure, before inserting the modified or de-supplied product. Do not place the product without checking. Otherwise, the product will not sit, and the elevator mechanism will be damaged if forced.